



GS Technical Data Sheet

GS GS-GT7B-4

Performance

Voltage	12
Capacity (10-hour)	6.5Ah
Capacity (20-hour)	6.8Ah
CCA @ -18°C	110A

Dimensions (±2mm)

Length	151mm
Width	66mm
Height	94mm

Weights & Measures

Mean Weight with Acid	2.7kg
-----------------------	-------

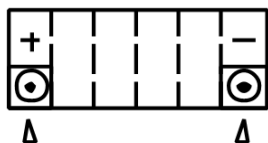
Technology

Technology	Cast Ca/Ca
Separator	AGM

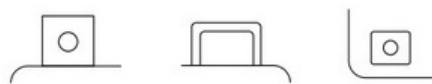


For Illustration Purposes Only

Cell Assembly Layout



Terminal Type - 11



Data Sheet generated on 03/07/2023 - E&OE