



GS Technical Data Sheet

GS GS-GT12B-4

Performance

| | |
|--------------------|--------|
| Voltage | 12 |
| Capacity (10-hour) | 10Ah |
| Capacity (20-hour) | 10.5Ah |
| CCA @ -18°C | 180A |

Dimensions (±2mm)

| | |
|--------|-------|
| Length | 151mm |
| Width | 70mm |
| Height | 131mm |

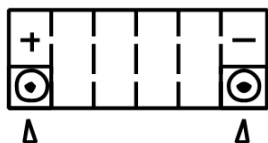
Weights & Measures

| | |
|-----------------------|-------|
| Mean Weight with Acid | 4.1kg |
|-----------------------|-------|

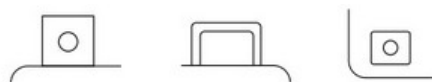
Technology

| | |
|------------|------------|
| Technology | Cast Ca/Ca |
| Separator | AGM |

Cell Assembly Layout



Terminal Type - 11



Data Sheet generated on 03/07/2023 – E&OE