

DM3058 5½ Digital Multimeter



► Features and Benefits

- Real 5 ½ digits readings resolution
- Up to 123 rdgs/s of measurement speed
- True-RMS AC Voltage Current measuring
- Quickly Save or Recall the 10 groups of Preset Configuration
- Preset 10 groups of Standard Sensor Configuration, built-in Thermocouple compensate in Cold Terminal
- Clone or backup all the configurations within instrument into other DM3058 via U-disc
- With easy, convenient and flexible random sensor measurement control software: UltraSensor
- Standard configuration interface: USB Device, USB Host, LAN, RS-232, GPIB, and support U-disc storage and Web remote control

► Specifications

Measurement Function	Range	Frequency Range/Test Current	Accuracy: 1 Year ± (%of reading +%of range)
DC Voltage	200 mV ~ 1000 V		0.015 + 0.003
DC Current	200 μA ~ 10 A		0.055+0.005
AC Voltage (RMS)	200 mV ~ 750 V	20 Hz ~ 100 kHz	0.20 + 0.05
AC Current (RMS)	20 mA ~ 10 A	20 Hz ~ 10 kHz	0.30+0.10
Resistance (2-wire and 4-wire)	200 Ω ~ 100 MΩ		0.020 + 0.003
Capacitance	2 nF ~ 10000 uF		1 + 0.5
Diode	2.4 V	1 mA	0.05 + 0.01
Continuity	2 kΩ	1 mA	0.05 + 0.01
Frequency and Period	200 mV ~ 750 V	20 Hz ~ 1 MHz	0.01+0.003

Note: All the indicators are the typical value under standard test situation

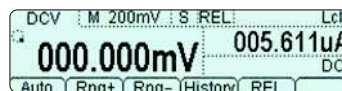
► Other Parameters

Measurement Function	DC Voltage, DC Current, AC Voltage (RMS), AC Current (RMS), Resistance (2-wire and 4-wire), Capacitance, Diodes, Frequency and Period, Continuity, Short Current, Any Sensor
Math	"Pass/Fail" Limit Test, Standard Deviation, Histogram, Relatively, Null, Max/Min/Avg, dBm, dB
Other Functions	Built-in 10 groups of configuration storage, 10 groups of configuration storage of any sensor, 2048 historical reading data record and check, 10 groups of historical datum storage, Exterior trigger input and VMC output, Reading hold, Single trigger
Display Characteristic	Multi-display, Menu, Multi-language help and Waveform display
Safety	CAT I 1000 V/CAT II 600 V, Pollution level 2
Shock and Vibration	MIL-T-28800E, type III, class 5 (sine)
Power Supply	AC 100 V ~ 120 V 45 Hz ~ 440 Hz AC 200 V ~ 240 V 45 Hz ~ 66 Hz 20 VA peak value

► Other Features

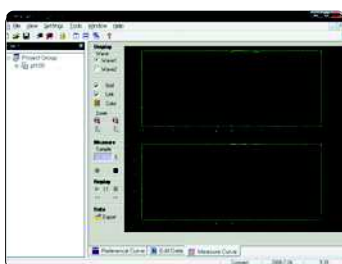


Pass / Fail



Multi-Display

► UltraSensor Software for any types of electrical sensor measurements



Ultrasensor Software Interface