

Power. Tested. Integrated.

Data Acquisition | Power Source | Electronic Load **CATALOG**



Power Without Limits

GW INSTEK
Simply Reliable

Data is Money Form Data ACQ to Money ACQ



If
Data is Money
then
Data ACQ = Money ACQ
go to
GW Instek



Measures and converts **14** different input signals



- Temperature with thermocouple, RTDs and thermistor
- DC/AC volts
- 2- and 4-wire resistance
- Frequency and period
- DC/AC current and capacitance
- Direct strain and bridge strain



Model		DAQ-9600
Display		6 1/2 Digit (1,200,000 counts max.)
Sampling Rate		38.4 k/sec
Memory		100 k
DC Voltage	100.0000 mV to 600.000 V	0.0035 + 0.0005
Resistance	100.0000 Ω to 1.000000 GΩ	0.010 + 0.001
DC Current	1.000000 μA to 2.00000 A	0.050 + 0.006
Diode Test	5.00000 V / 1 mA	0.01 + 0.030
AC Voltage	100.0000 mV to 400.000 V	0.06 + 0.03
AC Current	100.0000 μA to 2.000000 A	0.10 + 0.04
Frequency/Period	3 Hz to 1 MHz	0.03
Capacitance	1.000 nF to 100.0 μF	2.00 + 0.40
Temperature	Thermocouple (E/J/T/K/N/R/S/B)	0.2 °C (typical)
	RTD	0.06 °C (typical)
	Thermistor	0.1 °C (typical)
Interface*		USB device/host, LAN, Digital IO, GPIB (option)
Power Source		AC 100 V / 120 V / 220 V / 240 V ± 10 %, 50 Hz/ 60 Hz (50 VA max.)
Dimensions		267(W) mm x 107(H) mm x 358(D) mm
Weight		4.5 kg

Note : optional GPIB must be installed in factory ; Accuracy : ± (% of reading + % of range) or ± (% of reading), 1 year, TCAL ± 5 °C

PHU-Series Autoranging (Multi-Range) High Power DC Source

Scaling Application Extending Rating



- Remote wake up Function
- Constant Power Mode (for heating applications)
- Flexible Parallel Same voltage and current but difference capacity models could parallel.



3rd Generation SiC

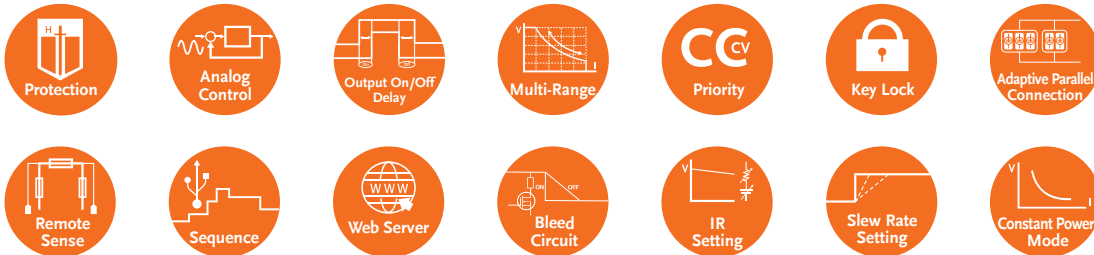
15 kW/3U

Advanced Web Server



Maximum current up to

510 A (Max.)



Medium Voltage				High Voltage				High Current			
Model	V	A	W	Model	V	A	W	Model	V	A	W
PHU 500-30	500	30	5 kW	PHU 1000-15	1000	15	5 kW	PHU 80-170	80	170	5 kW
PHU 500-60	500	60	10 kW	PHU 1000-30	1000	30	10 kW	PHU 80-340	80	340	10 kW
PHU 500-90	500	90	15 kW	PHU 1000-45	1000	45	15 kW	PHU 80-510	80	510	15 kW
PHU 750-20	750	20	5 kW	PHU 1500-10	1500	10	5 kW	PHU 200-70	200	70	5 kW
PHU 750-40	750	40	10 kW	PHU 1500-20	1500	20	10 kW	PHU 200-140	200	140	10 kW
PHU 750-60	750	60	15 kW	PHU 1500-30	1500	30	15 kW	PHU 200-210	200	210	15 kW

ASR-6450/6500/6600/6660 Series High-Performance AC/DC Power Source

10 Perfect Output Modes Dual Current Convergence



Adopts compound power semiconductor silicon carbide (SiC) technology to create a 4U 6 kVA high performance AC/DC power source with high power density

Rack-mount parallel models can up to 39.6 kVA

AC input and output supports single-phase and three-phase

10 output modes + Over 10 measurement functions



Type	Stand Alone		Rack Type						
Model	ASR-6500	ASR-6660	ASR-6500-10	ASR-6500-15	ASR-6660-13.2	ASR-6660-19.8	ASR-6660-26.4	ASR-6660-33	ASR-6660-39.6
AC Input Voltage	3P3W (VLL Y): AC 380 V to 415 V ± 10 % ; 3P4W (VLL Y): AC 380 V to 415 V ± 10 %								
AC Output Voltage	Phase Voltage 0 V to 350.0 V/Line Voltage 0 V to 700 V								
AC Output Current	1P2W: 50 A / 25 A 1P3W, 3P4W: 16.6 A	1P2W: 66 A / 33 A 1P3W, 3P4W: 22 A / 11 A	1P2W: 100 A / 50 A 1P3W, 3P4W: 33.54 A / 16.66 A	1P2W: 150 A / 75 A 1P3W, 3P4W: 50.01 A / 24.99 A	1P2W: 132 A / 66 A 1P3W, 3P4W: 44 A / 22 A	1P2W: 198 A / 99 A 1P3W, 3P4W: 66 A / 33 A	1P2W: 264 A / 132 A 1P3W, 3P4W: 88 A / 44 A	1P2W: 330 A / 165 A 1P3W, 3P4W: 110 A / 55 A	1P2W: 396 A / 198 A 1P3W, 3P4W: 132 A / 66 A
Output Frequency	2000 Hz	2000 Hz	1000 Hz	1000 Hz	1000 Hz	1000 Hz	550 Hz	550 Hz	550 Hz
AC Output Capacity	5 kVA	6.6 kVA	10 kVA	15 kVA	13.2 kVA	19.8 kVA	26.4 kVA	33 kVA	39.6 kVA
DC Output Voltage	-250.0 V to +250.0 V / -500.0 V to +500.0 V								
DC Output Capacity	5 kW	6.6 kW	10 kW	15 kW	13.2 kW	19.8 kW	26.4 kW	33 kW	39.6 kW

Model	ASR-6450	ASR-6600	ASR-6450-09	ASR-6450-13.5	ASR-6600-12	ASR-6600-18	ASR-6600-24	ASR-6600-30	ASR-6600-36
AC Input Voltage	1P2W (VLN): AC 200 V to 240 V ± 10 % 3P3W (VLL Delta): AC 200 V to 240 V ± 10 % 3P4W (VLL Y): AC 380 V to 415 V ± 10 %		" - C " : 3P3W (VLL Delta): AC 200 V to 240 V ± 10 % " - D " : 3P4W (VLL Y): AC 380 V to 415 V ± 10 %						
AC Output Voltage	Phase Voltage 0 V to 350.0 V/Line Voltage 0 V to 700 V								
AC Output Current	1P2W 45 A / 22.5 A 1P3W, 3P4W 15 A / 7.5 A	1P2W 60 A / 30 A 1P3W, 3P4W 20 A / 10 A	1P2W 90 A / 45 A 1P3W, 3P4W 30 A / 15 A	1P2W 135 A / 67.5 A 1P3W, 3P4W 45 A / 22.5 A	1P2W 120 A / 60 A 1P3W, 3P4W 40 A / 20 A	1P2W 180 A / 90 A 1P3W, 3P4W 60 A / 30 A	1P2W 240 A / 120 A 1P3W, 3P4W 80 A / 40 A	1P2W, 300 A / 150 A 1P3W, 3P4W 100 A / 50 A	1P2W, 360 A / 180 A 1P3W, 3P4W 120 A / 60 A
Output Frequency	2000 Hz	2000 Hz	1000 Hz	1000 Hz	1000 Hz	1000 Hz	550 Hz	550 Hz	550 Hz
AC Output Capacity	4.5 kVA	6 kVA	9 kVA	13.5 kVA	12 kVA	18 kVA	24 kVA	30 kVA	36 kVA
DC Output Voltage	-250.0 V to +250.0 V / E6-500.0 V to +500.0 V								
DC Output Capacity	4.5 kW	6 kW	9 kW	13.5 kW	12 kW	18 kW	24 kW	30 kW	36 kW

Master the Load, Perfect the Power



Turbo Mode



DSP precision measurement



Load ON Start-up



Scalable Parallel Expansion



Three-Phase Load



CC, LIN CC, CR, CV, CP and Rectified mode

Single phase up to 180 kW
Three phase up to 540 kW

Load ON Start-up



RS-232

GPIB

USB

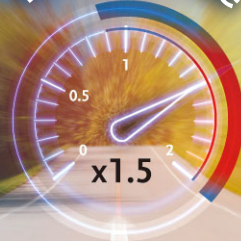
LAN

Model	Power (W)		Current (Ampere)		Voltage (Volt)
	Turbo OFF	Turbo ON	Turbo OFF	Turbo ON	
AEL-5002-350-18.75	1875 W	3750 W (x2)*	18.75 Arms / 56.25 Apeak	37.5 Arms / 56.25 Apeak (x2)*	50 Vrms to 350 Vrms / 500 Vdc
AEL-5003-350-28	2800 W	5600 W (x2)*	28 Arms / 84 Apeak	56 Arms / 84 Apeak (x2)*	
AEL-5004-350-37.5	3750 W	7500 W (x2)*	37.5 Arms / 112.5 Apeak	75.0 Arms / 112.5 Apeak (x2)*	
AEL-5002-425-18.75	1875 W	3750 W (x2)*	18.75 Arms / 56.25 Apeak	37.5 Arms / 56.25 Apeak (x2)*	50 Vrms to 425 Vrms / 600 Vdc
AEL-5003-425-28	2800 W	5600 W (x2)*	28 Arms / 84 Apeak	56 Arms / 84 Apeak (x2)*	
AEL-5004-425-37.5	3750 W	7500 W (x2)*	37.5 Arms / 112.5 Apeak	75.0 Arms / 112.5 Apeak (x2)*	
AEL-5006-350-56	5600 W	11200 W (x2)*	56.0 Arms / 168 Apeak	112.0 Arms / 168 Apeak (x2)*	50 Vrms to 350 Vrms / 500 Vdc
AEL-5008-350-75	7500 W	15000 W (x2)*	75.0 Arms / 225 Apeak	150.0 Arms / 225 Apeak (x2)*	
AEL-5012-350-112.5	11250 W	22500 W (x2)*	112.5 Arms / 337.5 Apeak	225 Arms / 337.5 Apeak (x2)*	
AEL-5015-350-112.5	15000 W	30000 W (x2)*	112.5 Arms / 337.5 Apeak	225 Arms / 337.5 Apeak (x2)*	
AEL-5019-350-112.5	18750 W	37500 W (x2)*	112.5 Arms / 337.5 Apeak	225 Arms / 337.5 Apeak (x2)*	
AEL-5023-350-112.5	22500 W	45000 W (x2)*	112.5 Arms / 337.5 Apeak	225 Arms / 337.5 Apeak (x2)*	
AEL-5006-425-56	5600 W	11200 W (x2)*	56.0 Arms / 168 Apeak	112.0 Arms / 168 Apeak (x2)*	50 Vrms to 425 Vrms / 600 Vdc
AEL-5008-425-75	7500 W	15000 W (x2)*	75.0 Arms / 225 Apeak	150.0 Arms / 225 Apeak (x2)*	
AEL-5012-425-112.5	11250 W	22500 W (x2)*	112.5 Arms / 337.5 Apeak	225 Arms / 337.5 Apeak (x2)*	
AEL-5015-425-112.5	15000 W	30000 W (x2)*	112.5 Arms / 337.5 Apeak	225 Arms / 337.5 Apeak (x2)*	
AEL-5019-425-112.5	18750 W	37500 W (x2)*	112.5 Arms / 337.5 Apeak	225 Arms / 337.5 Apeak (x2)*	
AEL-5023-425-112.5	22500 W	45000 W (x2)*	112.5 Arms / 337.5 Apeak	225 Arms / 337.5 Apeak (x2)*	
AEL-5003-480-18.75	2800 W	5600 W (x2)*	18.75 Arms / 56.25 Apeak	37.5 Arms / 56.25 Apeak (x2)*	50 Vrms to 480 Vrms / 700 Vdc
AEL-5004-480-28	3750 W	7500 W (x2)*	28 Arms / 84 Apeak	56 Arms / 84 Apeak (x2)*	

* Power and current boost rate of Turbo ON

Turbocharging Your Load Operations

Turbo Mode



- High voltage (1200V) and high environmental temperature (40 degrees Celsius) have better on-load power than peer models of competitors in the market
- Unique function: CV mode can be used in electronic load parallel mode
- The 600V/1200V models have a built-in soft start circuit to effectively protect the electronic load and greatly improve the safety property of testing

Surge Mode

Intuitive five-point Surge Mode simplifies testing of simulated capacitive loads

Turbo Mode

Provide transient 1.5 times of current and power to improve test capability

Model	PEL-5004G-150-400		PEL-5005G-150-500		PEL-5006G-150-600	
Power	0 ~ 4 kW	0 ~ 6 kW max.	0 ~ 5 kW	0 ~ 7.5 kW max.	0 ~ 6 kW	0 ~ 9 kW max.
Current	0 ~ 400 A	0 ~ 600 A max.	0 ~ 500 A	0 ~ 750A max.	0 ~ 600 A	0 ~ 900 A max.
Voltage	0 ~ 150 V		0 ~ 150 V		0 ~ 150 V	
Model	PEL-5004G-600-280		PEL-5006G-600-350		PEL-5004G-600-420	
Power	0 ~ 4 kW	0 ~ 6 kW max.	0 ~ 5 kW	0 ~ 7.5 kW max.	0 ~ 6 kW	0 ~ 9 kW max.
Current	0 ~ 280 A	0 ~ 420 A max.	0 ~ 350 A	0 ~ 525 A max.	0 ~ 420 A	0 ~ 630 A max.
Voltage	0 ~ 600 V		0 ~ 600 V		0 ~ 600 V	
Model	PEL-5004G-1200-160		PEL-5005G-1200-200		PEL-5006G-1200-240	
Power	0 ~ 4 kW	0 ~ 6 kW max.	0 ~ 5 kW	0 ~ 7.5 kW max.	0 ~ 6 kW	0 ~ 9 kW max.
Current	0 ~ 160 A	0 ~ 240 A max.	0 ~ 200 A	0 ~ 300 A max.	0 ~ 240 A	0 ~ 360 A max.
Voltage	0 ~ 1200 V		0 ~ 1200 V		0 ~ 1200 V	

PEL-5000C Series High Power DC Electronic Load



**Ultimate Power.
Absolute Precision.**

- | Batteries |
- | EV Chargers |
- | Charging Stations |
- | Solar Panels |

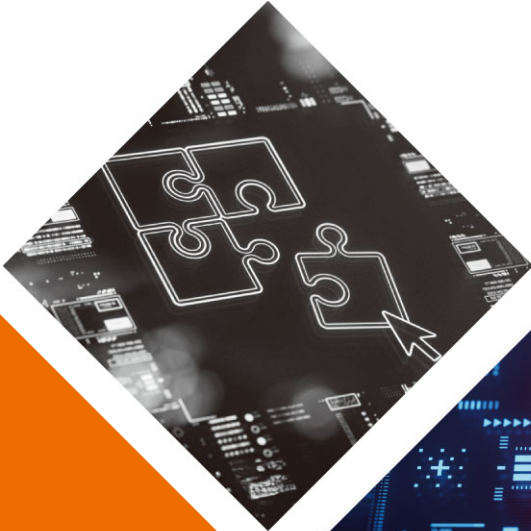
- Maximum Power up to 192 kW
- Up to 8 units of Master/Slave Parallel Control
- 5-digit Digital Voltage, Current and Power Meter
- Large LCD Display
- Display Voltage Value, Current Value, Watt Value at the Same Time
- Suitable for Power Factor Regulator (PFC) Testing (600 V, 1200 V Models)
- Automatically Perform OCP, OPP Test
- The Power-on State Value Can be Set
- Constant Current, Constant Resistance, Constant Voltage, Constant Power, Constant Voltage + Current Limit, Constant Voltage + Power Limit. Dynamic and Short Circuit Modes
- Short Circuit Time Can be Set During Short Circuit Test
- Over Current, Over Power, Over Temperature Protection and Over Voltage Warning
- Voltage Polarity Display Can be Set to Positive Value ("+") or Negative Value ("-")
- Support Solar Panel DC/DC Converter MPPT Test



Model	PEL-5006C-150-600	PEL-5008C-150-800	PEL-5010C-150-1000	PEL-5012C-150-1200	PEL-5015C-150-1500	PEL-5018C-150-1800	PEL-5020C-150-2000	PEL-5024C-150-2000
Power	6 KW 6 KW	8 KW 8 KW	10 KW 10 KW	12 KW 12 KW	15 KW 15 KW	18 KW 18 KW	20 KW 20 KW	24 KW 24 KW
Current	0 ~ 60 A 0 ~ 600 A	0 ~ 80 A 0 ~ 800 A	0 ~ 100 A 0 ~ 1000 A	0 ~ 120 A 0 ~ 1200 A	0 ~ 150 A 0 ~ 1500 A	0 ~ 180 A 0 ~ 1800 A	0 ~ 200 A 0 ~ 2000 A	0 ~ 200 A 0 ~ 2000 A
Voltage	0 ~ 150 V		0 ~ 150 V		0 ~ 150 V		0 ~ 150 V	
Model	PEL-5006C-600-420	PEL-5008C-600-560	PEL-5010C-600-700	PEL-5012C-600-840	PEL-5015C-600-1050	PEL-5018C-600-1260	PEL-5020C-600-1400	PEL-5024C-600-1680
Power	6 KW 6 KW	8 KW 8 KW	10 KW 10 KW	12 KW 12 KW	15 KW 15 KW	18 KW 18 KW	20 KW 20 KW	24 KW 24 KW
Current	0 ~ 42 A 0 ~ 420 A	0 ~ 56 A 0 ~ 560 A	0 ~ 70 A 0 ~ 700 A	0 ~ 84 A 0 ~ 840 A	0 ~ 105 A 0 ~ 1050 A	0 ~ 126 A 0 ~ 1260 A	0 ~ 140 A 0 ~ 1400 A	0 ~ 168 A 0 ~ 1680 A
Voltage	0 ~ 600 V		0 ~ 600 V		0 ~ 600 V		0 ~ 600 V	
Model	PEL-5006C-1200-240	PEL-5008C-1200-320	PEL-5010C-1200-400	PEL-5012C-1200-480	PEL-5015C-1200-600	PEL-5018C-1200-720	PEL-5020C-1200-800	PEL-5024C-1200-960
Power	6 KW 6 KW	8 KW 8 KW	10 KW 10 KW	12 KW 12 KW	15 KW 15 KW	18 KW 18 KW	20 KW 20 KW	24 KW 24 KW
Current	0 ~ 24 A 0 ~ 240 A	0 ~ 32 A 0 ~ 320 A	0 ~ 40 A 0 ~ 400 A	0 ~ 48 A 0 ~ 480 A	0 ~ 60 A 0 ~ 600 A	0 ~ 72 A 0 ~ 720 A	0 ~ 80 A 0 ~ 800 A	0 ~ 96 A 0 ~ 960 A
Voltage	0 ~ 1200 V		0 ~ 1200 V		0 ~ 1200 V		0 ~ 1200 V	

DISTRIBUTOR :

Specifications subject to change without notice.



Global Headquarters

GOOD WILL INSTRUMENT CO., LTD.

No.7-1, Jhongsing Road, Tucheng Dist., New Taipei City 236, Taiwan
T +886-2-2268-0389 F +886-2-2268-0639
E-mail: marketing@goodwill.com.tw

China Subsidiary

GOOD WILL INSTRUMENT (SUZHOU) CO., LTD.

No. 521, Zhujiang Road, Snd, Suzhou Jiangsu 215011 China
T +86-512-6661-7177 F +86-512-6661-7277

Malaysia Subsidiary

GOOD WILL INSTRUMENT (SEA) SDN. BHD.

No. 1-3-18, Elit Avenue, Jalan Mayang Pasir 3,
11950 Bayan Baru, Penang, Malaysia
T +604-6111122 F +604-6115225

Europe Subsidiary

GOOD WILL INSTRUMENT EURO B.V.

De Run 5427A, 5504DG Veldhoven, THE NETHERLANDS
T +31(0)40-2557790 F +31(0)40-2541194

U.S.A. Subsidiary

INSTEK AMERICA CORP.

5198 Brooks Street Montclair, CA 91763, U.S.A.
T +1-909-399-3535 F +1-909-399-0819

Japan Subsidiary

TEXIO TECHNOLOGY CORPORATION.

7F Towa Fudosan Shin Yokohama Bldg., 2-18-13 Shin
Yokohama, Kohoku-ku, Yokohama, Kanagawa,
222-0033 Japan
T +81-45-620-2305 F +81-45-534-7181

Korea Subsidiary

GOOD WILL INSTRUMENT KOREA CO., LTD.

Room No.503, Gyeonginro 775 (Mullae-Dong 3Ga,
Ace Hightech-City B/D 1Dong), Yeongduengpo-Gu,
Seoul 150093, Korea
T +82-2-3439-2205 F +82-2-3439-2207

India Subsidiary

GW INSTEK INDIA LLP.

2F, No. 20/1, Salarpuria Galleria Building, Bellary Road, Kashi Nagar,
Byatarayanapura, Bangalore, Karnataka 560092 India
T +91-80-4203-3235

GW INSTEK
Simply Reliable



Website



Facebook

LinkedIn